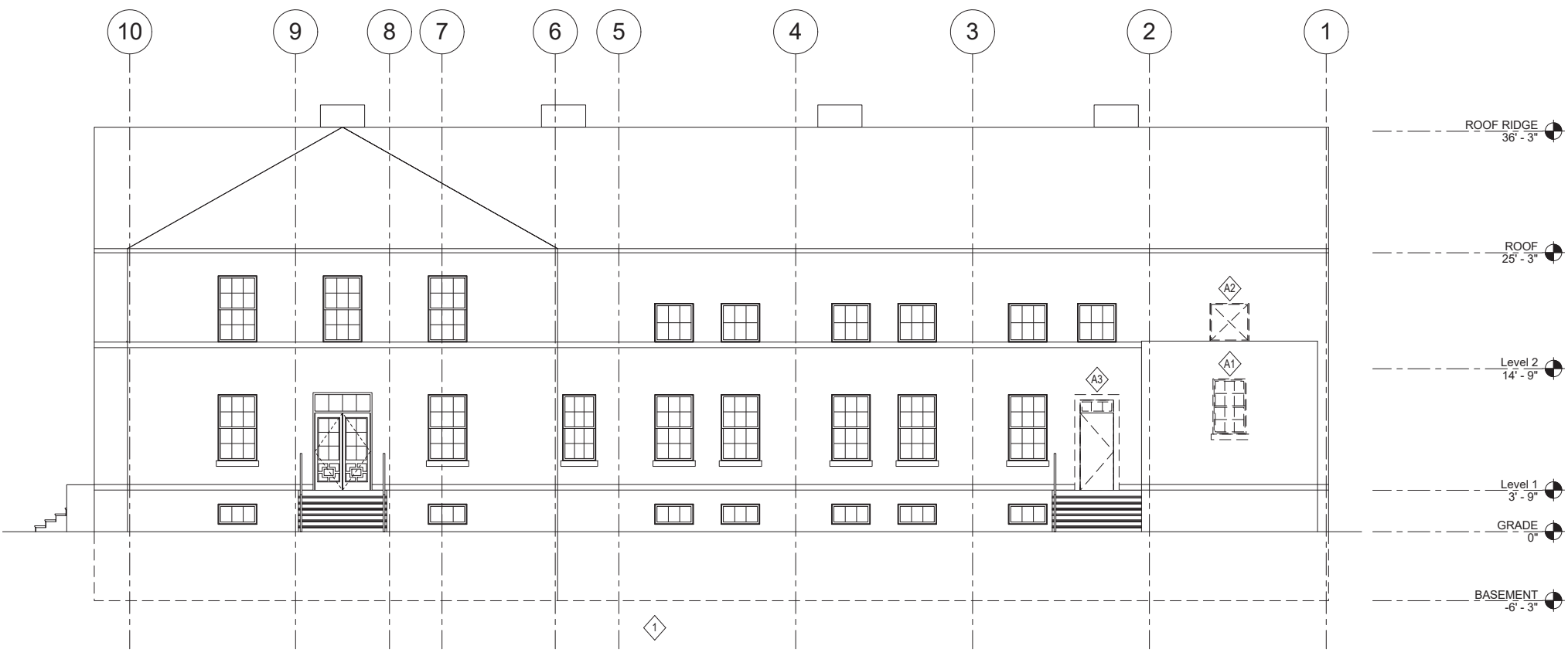
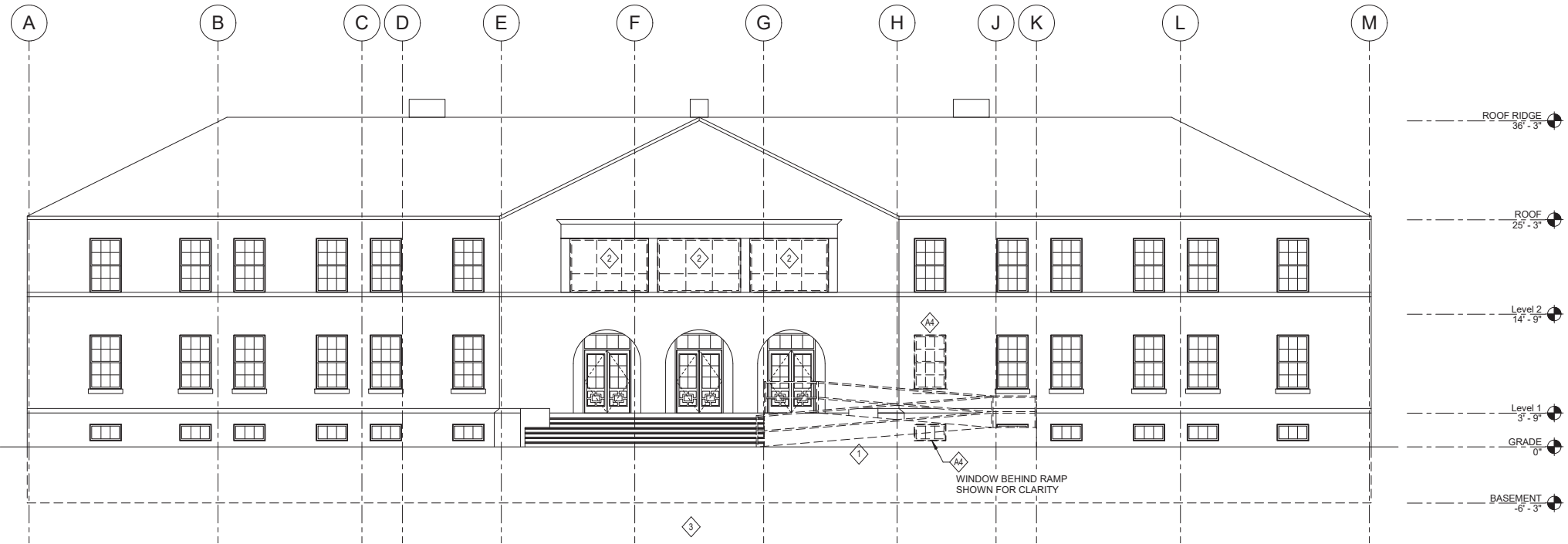
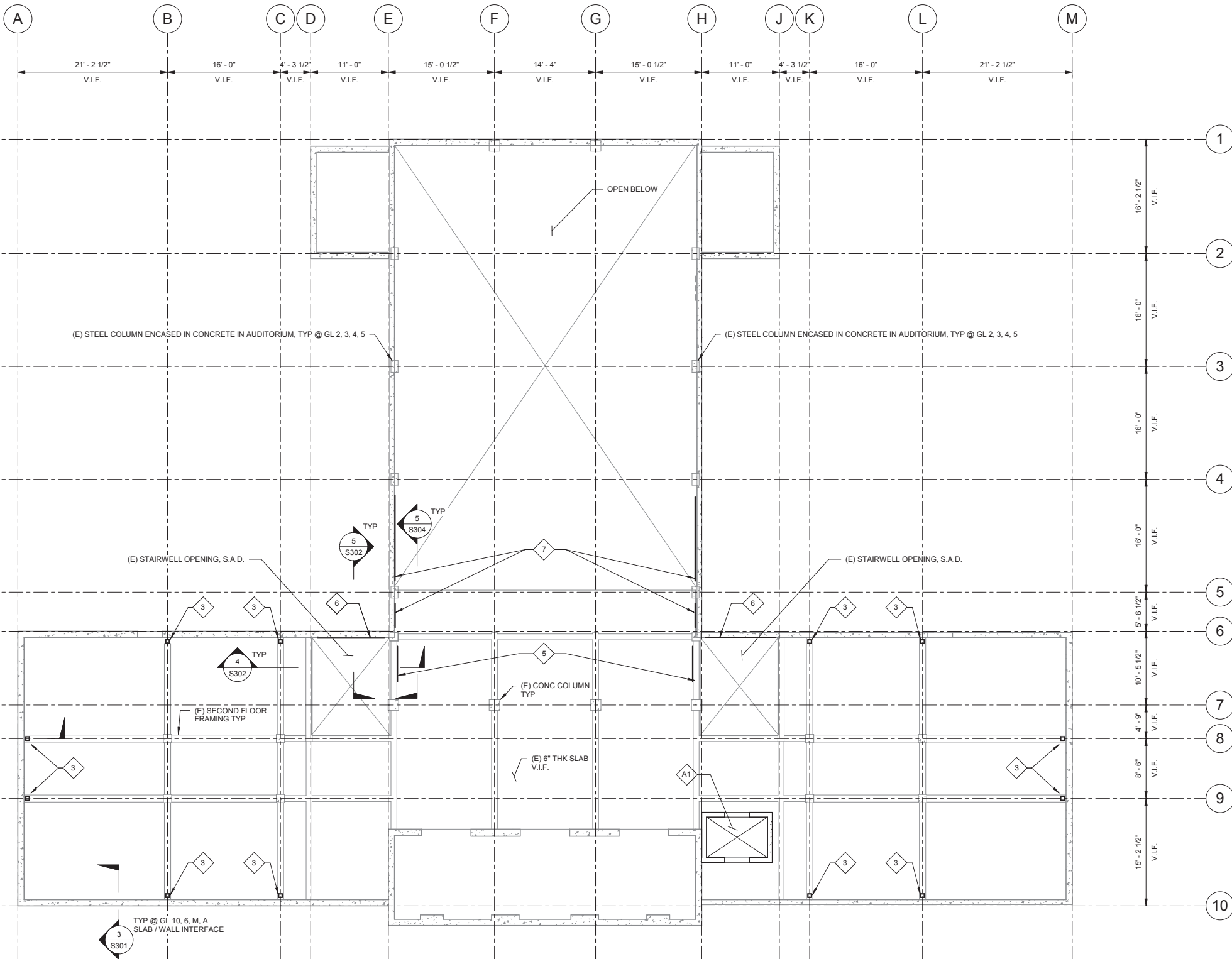
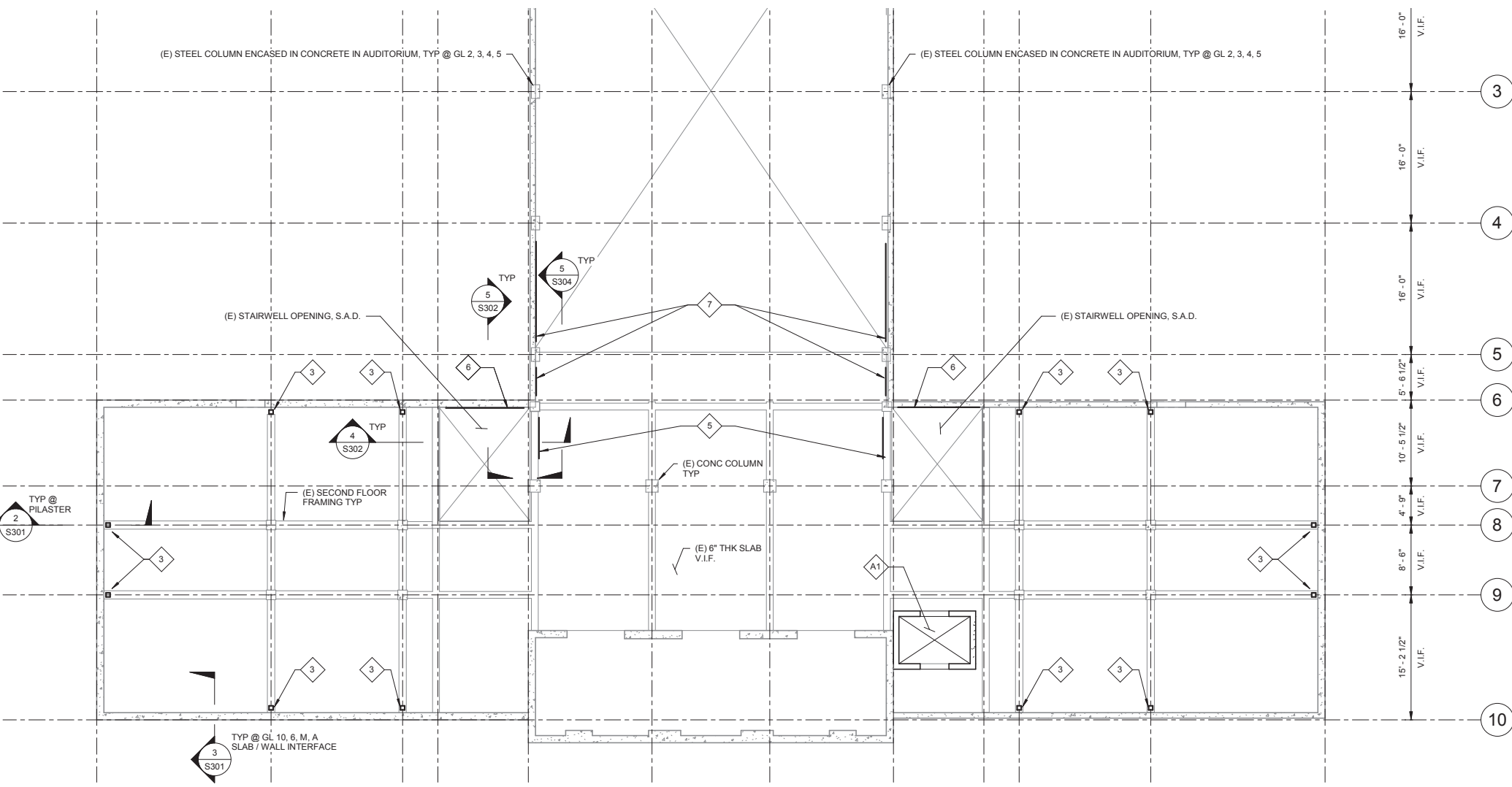


**2 VERTICAL ROD BRACING SECTION**  
 S501 | S501 1/2" = 1'-0"









(E) STEEL COLUMN ENCASED IN CONCRETE IN AUDITORIUM, TYP @ GL 2, 3, 4, 5

(E) STEEL COLUMN ENCASED IN CONCRETE IN AUDITORIUM, TYP @ GL 2, 3, 4, 5

(E) STAIRWELL OPENING, S.A.D.

(E) STAIRWELL OPENING, S.A.D.

TYP @  
2  
S301  
PILASTER

(E) SECOND FLOOR  
FRAMING TYP

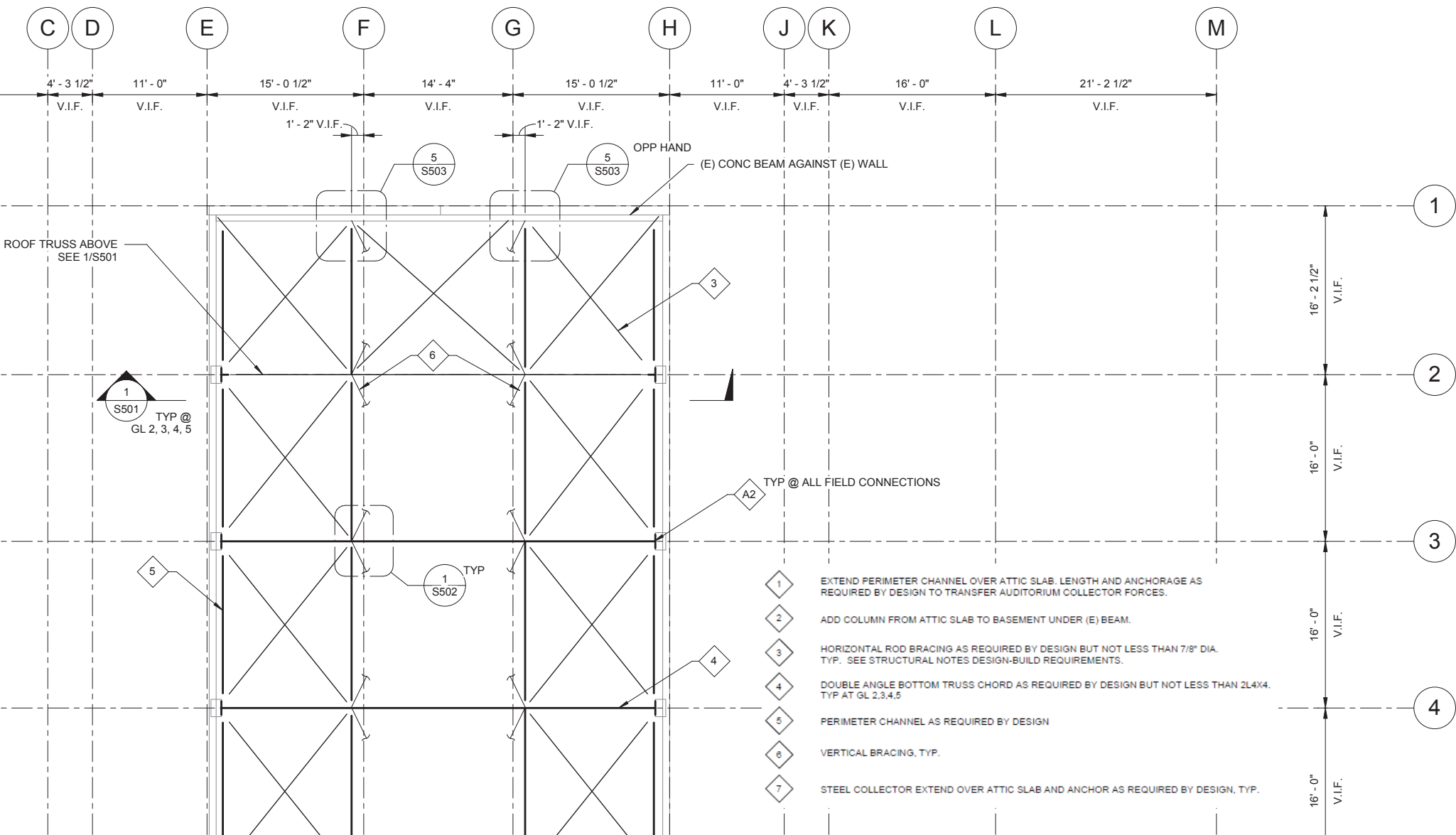
(E) CONC COLUMN  
TYP

(E) 6" THK SLAB  
V.I.F.

TYP @ GL 10, 6, M, A  
3  
S301  
SLAB / WALL INTERFACE

16'-0" V.I.F.  
16'-0" V.I.F.  
16'-0" V.I.F.  
5'-6 1/2" V.I.F.  
10'-5 1/2" V.I.F.  
4'-5" V.I.F.  
8'-6" V.I.F.  
15'-2 1/2" V.I.F.

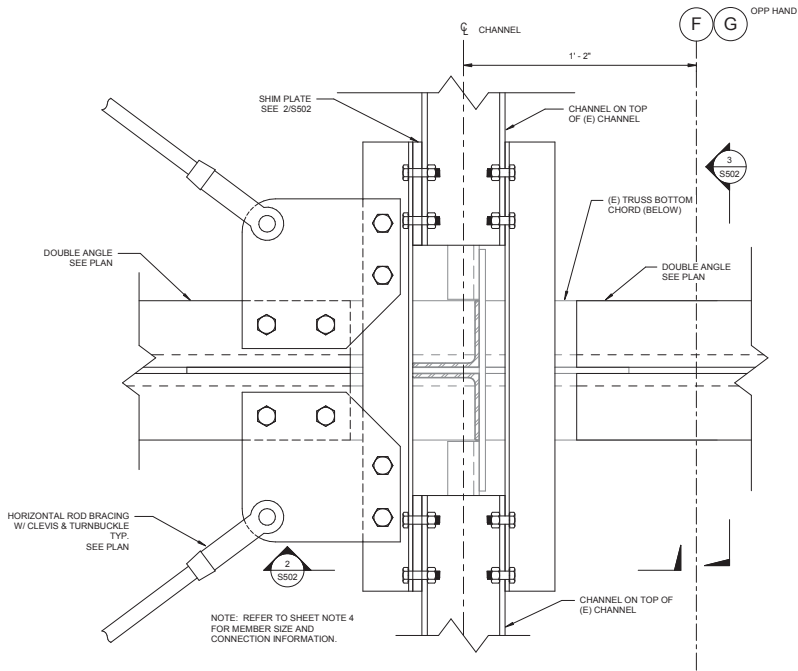
3  
4  
5  
6  
7  
8  
9  
10



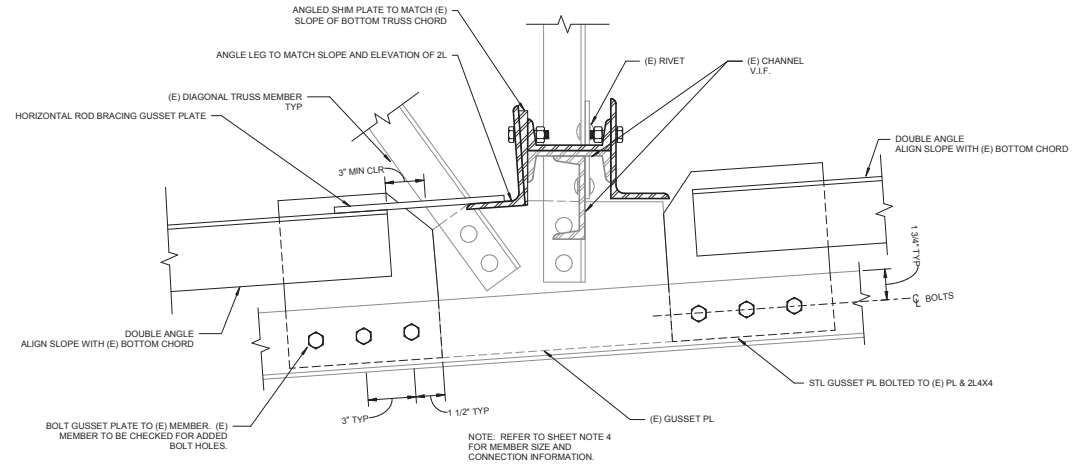
- 1 EXTEND PERIMETER CHANNEL OVER ATTIC SLAB. LENGTH AND ANCHORAGE AS REQUIRED BY DESIGN TO TRANSFER AUDITORIUM COLLECTOR FORCES.
- 2 ADD COLUMN FROM ATTIC SLAB TO BASEMENT UNDER (E) BEAM.
- 3 HORIZONTAL ROD BRACING AS REQUIRED BY DESIGN BUT NOT LESS THAN 7/8" DIA. TYP. SEE STRUCTURAL NOTES DESIGN-BUILD REQUIREMENTS.
- 4 DOUBLE ANGLE BOTTOM TRUSS CHORD AS REQUIRED BY DESIGN BUT NOT LESS THAN 2L4X4. TYP AT GL 2,3,4,5
- 5 PERIMETER CHANNEL AS REQUIRED BY DESIGN
- 6 VERTICAL BRACING, TYP.
- 7 STEEL COLLECTOR EXTEND OVER ATTIC SLAB AND ANCHOR AS REQUIRED BY DESIGN, TYP.

**SHEET NOTES:**

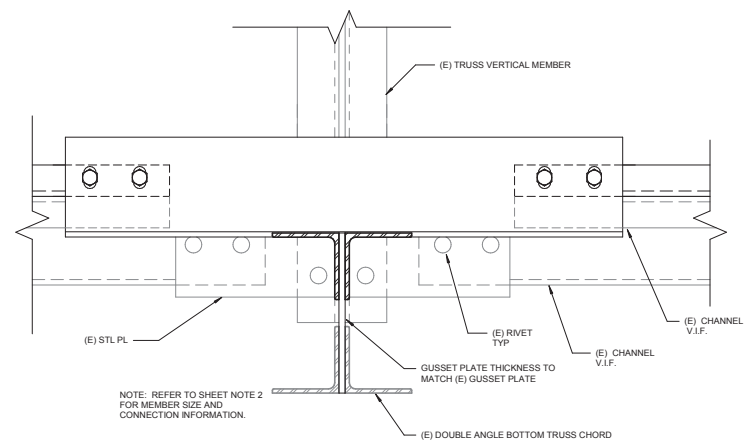
1. CONTRACTOR TO FIELD VERIFY BOLT LOCATION PRIOR TO FABRICATION. CONTACT EOR FOR ANY DISCREPANCIES.
2. STRUCTURAL DESIGN MEMBERS REPRESENT THE MINIMUM CRITERIA TO MEET CODE REQUIREMENTS. UPSIZING OF MEMBERS AND/OR STRENGTHENING OF CONNECTIONS MAY BE REQUIRED IF DICTATED BY STRUCTURAL CALCULATIONS AND/OR CODE REQUIREMENTS. FINAL DESIGN TO BE BY CONTRACTOR.



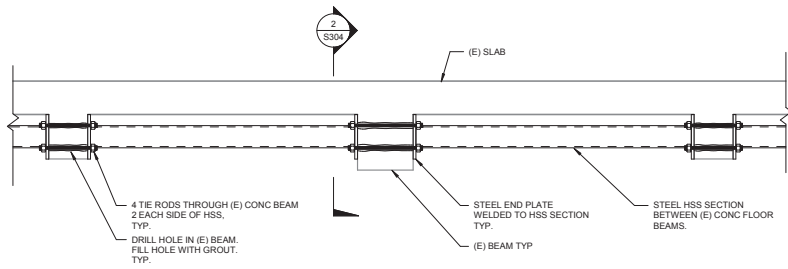
**1 HORIZONTAL BRACING @ COLLECTOR**  
S104 | S502 3" = 1'-0"



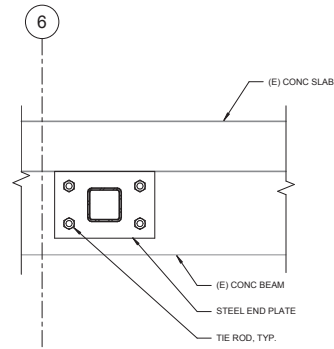
**2 TYPICAL TRUSS STRENGTHENING @ (E) GUSSET**  
S501 | S502 3" = 1'-0"



**3 TRUSS CHANNEL DETAIL 2**  
S501 | S502 3" = 1'-0"



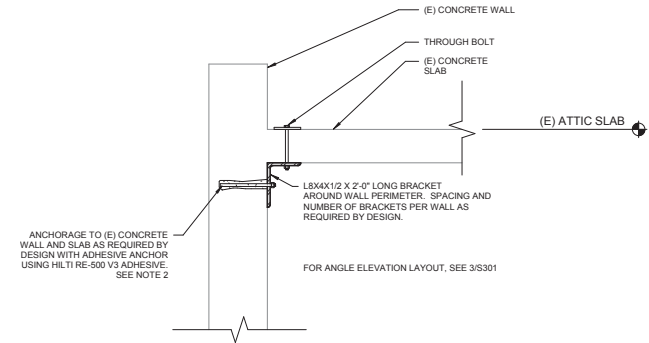
**1 STEEL BEAM COLLECTOR**  
S102 | S304 1" = 1'-0"



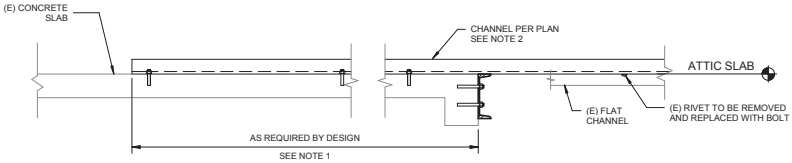
**2 STEEL BEAM COLLECTOR - SECTION**  
S304 | S304 1 1/2" = 1'-0"

**SHEET NOTES:**

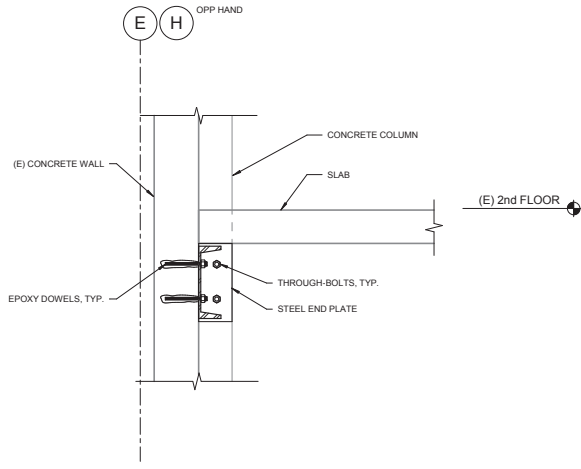
- ANCHORAGE AS REQUIRED BY DESIGN WITH MINIMUM 2'-0" EDGE DISTANCE FROM FIRST ROW OF ANCHORS TO EDGE OF SLAB.



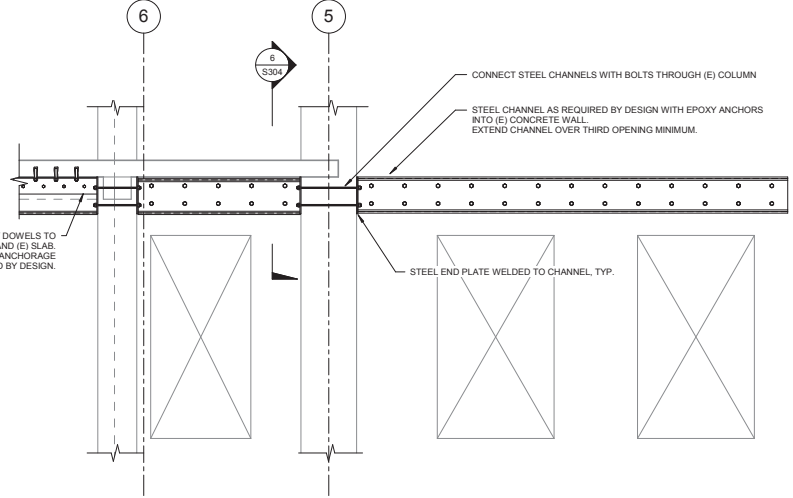
**3 SHEAR CONNECTION @ ATTIC SLAB**  
S304 1" = 1'-0"



**4 COLLECTOR CONNECTION TO ATTIC SLAB**  
S104 | S304 1" = 1'-0"



**5 STEEL COLLECTOR AT 2ND FLR SECTION**  
S304 | S304 1" = 1'-0"



**5 STEEL COLLECTOR BTW OFFICE WING AND AUDITORIUM WALL**  
S102 | S304 1/2" = 1'-0"



